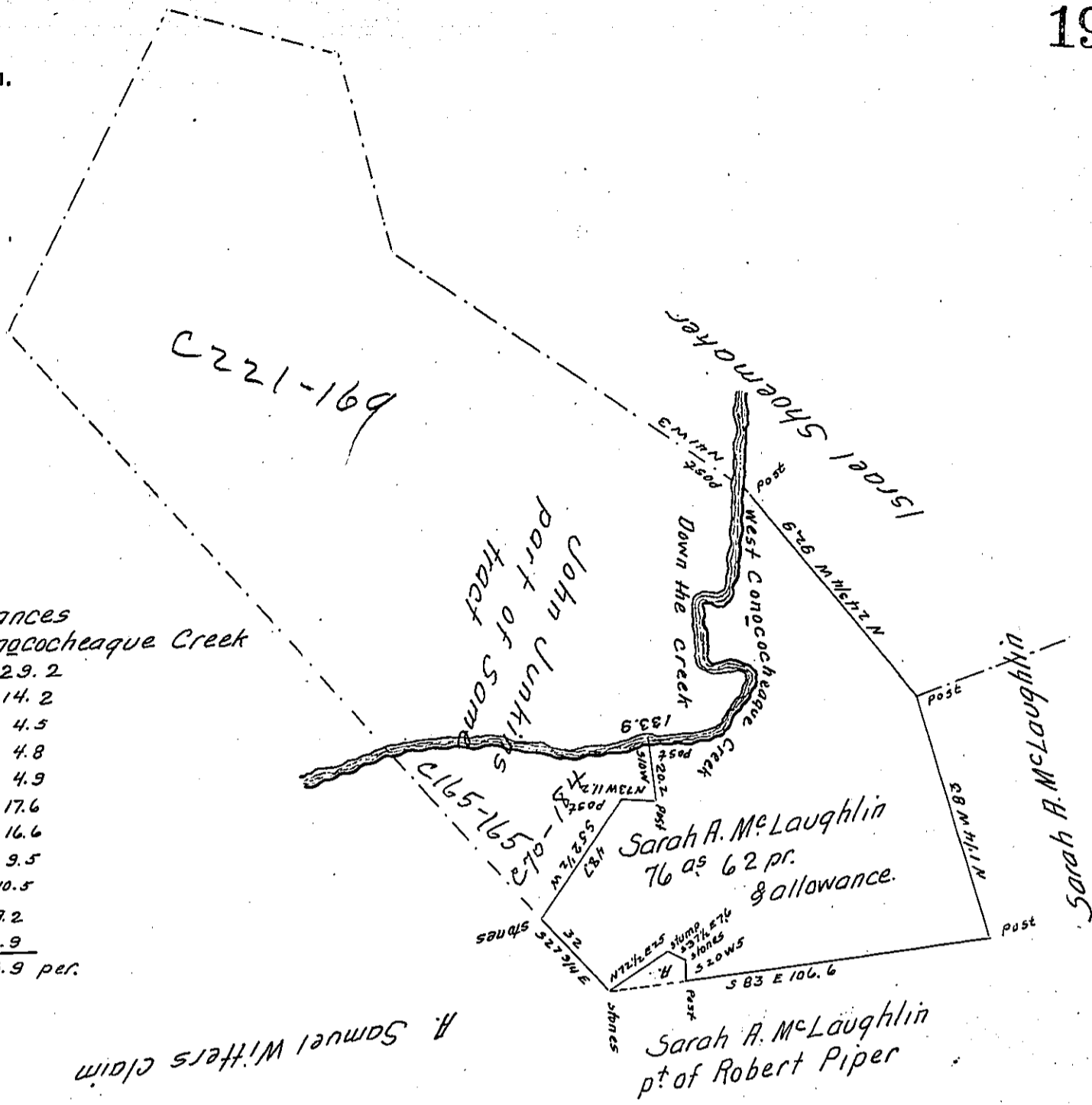


FORM No. 1.

Courses & distances  
down West Congcocheague Creek

S 21 3/4 W -	29.2
S. 34 W -	14.2
N. 47 W -	4.5
S. 60 W -	4.8
S. 22 W -	4.9
S. 7/4 W -	17.6
S. 65 E -	16.6
S. 51 1/2 W -	9.5
S. 56 1/2 W -	10.5
S. 83 1/4 W -	3.2
N. 85 W -	12.9
133.9 per.	



Draught of a tract of Land in Fannet Township Franklin County Pa. Contain-  
ing Seventy Six acres and Sixty two perches and allowance of Six percent  
for (obl.) & c. part of 270<sup>o</sup> 148 per. originally Surveyed in pursuance of an  
order of Survey granted to Stephen Duncan dated December 13<sup>th</sup> 1768  
N<sup>o</sup> 2168.

Surveyed the above part for Sarah A. McLaughlin October 25<sup>th</sup> 1870.

To Jacob M. Campbell Esqr. } Emanuel Kuhn C.S.  
Surveyor General

IN TESTIMONY that the above is a copy of the original remaining on file in  
the Department of Internal Affairs of Pennsylvania, made  
conformably to an Act of Assembly approved the 16th day of  
February, 1833, I have hereunto set my Hand and caused  
the Seal of said Department to be affixed at Harrisburg,  
this twenty third day of March 1906.

*Isaac P. [Signature]*  
Secretary of Internal Affairs.